



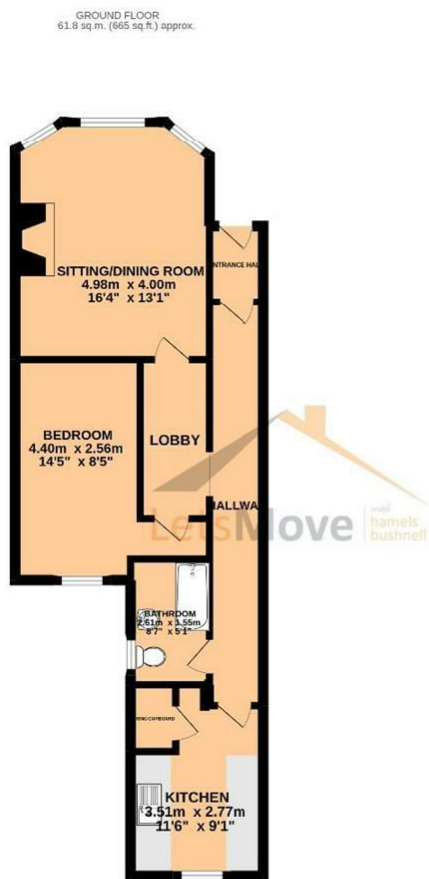
## **Westfield Flats, Newport, TF10 7EN**

**£700 PCM**

Watch the world go by! You certainly can if you rent this great first floor flat located within easy walking distance of Newport town centre. The spacious lounge diner is complimented by a generous bedroom, modern kitchen & bathroom with shower. Viewing is essential to appreciate what is offer.

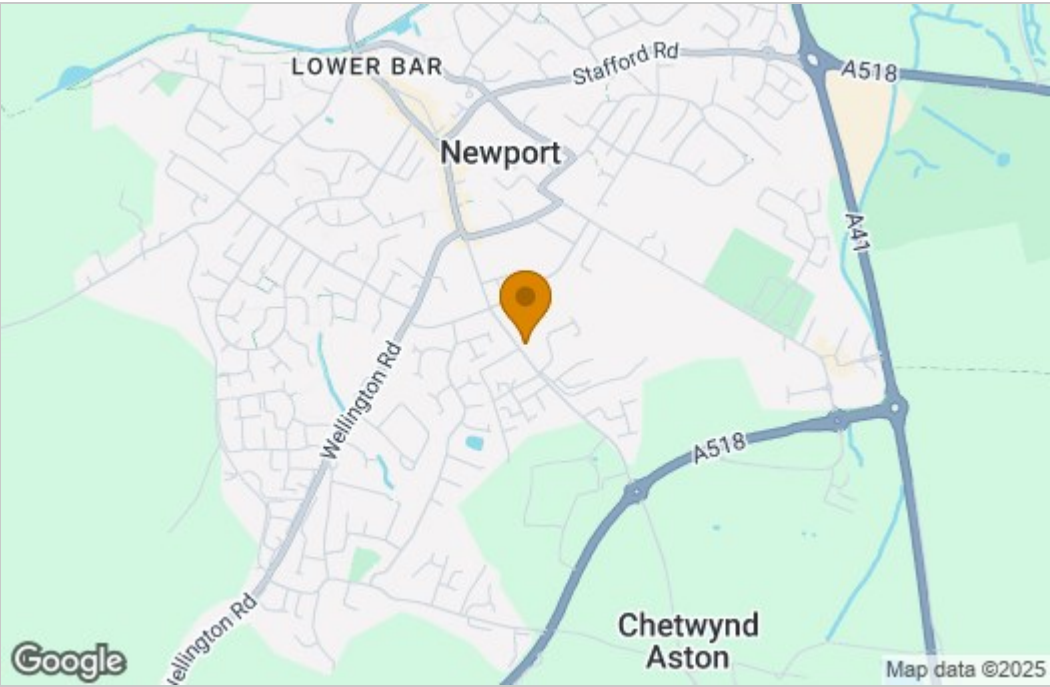


Floor Plan

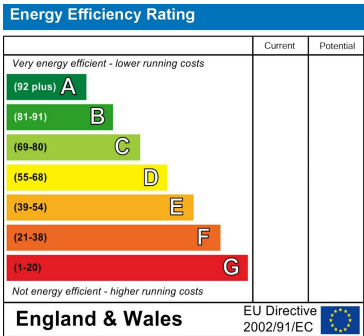


TOTAL FLOOR AREA : 61.8 sq.m. (665 sq.ft.) approx.  
Measurements are approximate, not to scale, illustrative purposes only.  
Made with Mapbox ©2022

Area Map



Energy Efficiency Graph



These particulars, whilst believed to be accurate are set out as a general outline only for guidance and do not constitute any part of an offer or contract. Intending purchasers should not rely on them as statements of representation of fact, but must satisfy themselves by inspection or otherwise as to their accuracy. No person in this firms employment has the authority to make or give any representation or warranty in respect of the property.